

Human DKK1 Protein

Cat. No. DKK-HM101

Description

| | |
|-------------------------|---|
| Source | Recombinant Human DKK1 Protein is expressed from HEK293 with His tag at the C-Terminus. It contains Thr32-His266. |
| Accession | O94907 |
| Molecular Weight | The protein has a predicted MW of 26.87 kDa. Due to glycosylation, the protein migrates to 42-52 kDa based on Bis-Tris PAGE result. |
| Endotoxin | Less than 1EU per μg by the LAL method. |
| Purity | > 95% as determined by Bis-Tris PAGE |

Formulation and Storage

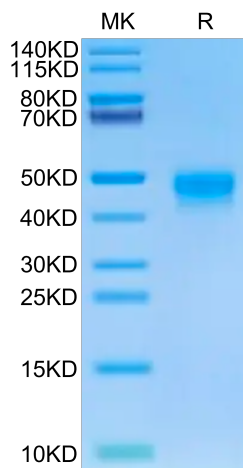
| | |
|-----------------------|---|
| Formulation | Lyophilized from 0.22 μm filtered solution in PBS (pH 7.4). Normally 8% trehalose is added as protectant before lyophilization. |
| Reconstitution | Centrifuge the tube before opening. Reconstituting to a concentration more than 100 $\mu\text{g}/\text{ml}$ is recommended. Dissolve the lyophilized protein in distilled water. |
| Storage | -20 to -80°C for 12 months as supplied from date of receipt. -80°C for 3 months after reconstitution. Recommend to aliquot the protein into smaller quantities for optimal storage. Please minimize freeze-thaw cycles. |

Background

Dickkopf related protein 1 (Dkk-1) is the founding member of the Dickkopf family of proteins that includes Dkk-1, -2, -3, -4, and a related protein, Soggy. Dkk proteins are secreted proteins that contain two conserved cysteine-rich domains separated by a linker region. Dkk antagonizes canonical Wnt signaling by inhibiting LRP5/6 interaction with Wnt and by forming a ternary complex with the transmembrane protein KREMEN that promotes internalization of LRP5/6. DKKs play an important role in vertebrate development, where they locally inhibit Wnt regulated processes such as antero-posterior axial patterning, limb development, somitogenesis and eye formation.

Assay Data

Bis-Tris PAGE



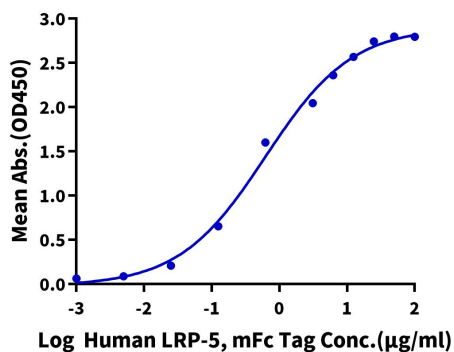
Human DKK1 on Bis-Tris PAGE under reduced condition. The purity is greater than 95%.

ELISA Data

Assay Data

Human DKK1, His Tag ELISA

0.5µg Human DKK1, His Tag Per Well



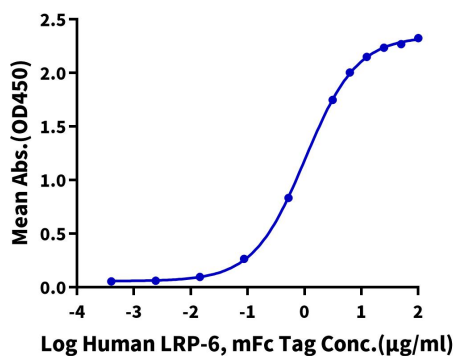
Immobilized Human DKK1, His Tag at 5µg/ml (100µl/well) on the plate. Dose response curve for Human LRP-5, mFc Tag with the EC50 of 0.63µg/ml determined by ELISA (QC Test).

Assay Data

ELISA Data

Human DKK1, His Tag ELISA

0.5µg Human DKK1, His Tag Per Well

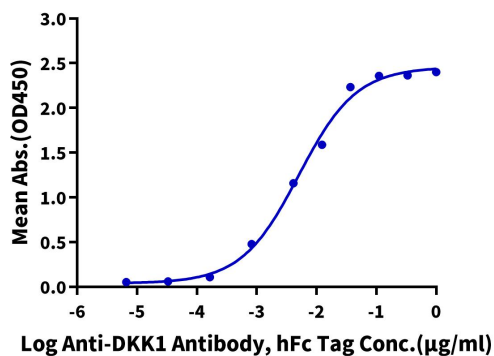


Immobilized Human DKK1, His Tag at 5µg/ml (100µl/well) on the plate. Dose response curve for Human LRP-6, mFc Tag with the EC50 of 1.03µg/ml determined by ELISA.

ELISA Data

Human DKK1, His Tag ELISA

0.05µg Human DKK1, His Tag Per Well



Immobilized Human DKK1, His Tag at 0.5µg/ml (100µl/well) on the plate. Dose response curve for Anti-DKK1 Antibody, hFc Tag with the EC50 of 5.1ng/ml determined by ELISA.